

Historic, Archive Document

Do not assume content reflects current scientific knowledge, policies, or practices.



SEC. 562 P.L. & R.

LIBRARY
RECEIVED
☆ APR 17 1937 ☆
U. S. Department of Agriculture.

U. S. DEPARTMENT OF AGRICULTURE,

WASHINGTON, D. C.

Unusual Values...
from LEHMAN GARDENS

After Five Days Return to
THE LEHMAN GARDENS
FARIBAULT, MINN.

Return Postage Guaranteed

BUREAU OF PLANT INDUSTRY
Fruit and Vegetable Crops and Diseases

GPO S-3591



LILIES THE GLORY OF THE GARDEN



Lilium Regale

HARDY GARDEN LILIES

LILY HENRYI The rich, golden-orange color of this lily and its ability to thrive in severe climates with little attention has made this lily a favorite among many gardeners. It grows 4 to 6 feet tall carrying its flowers in a stately manner. Thrives in any soil. A very vigorous grower and the bulbs should be planted at least 8 inches deep. Plant some of these lilies and enjoy their beauty this summer. Blooms in August and September. Each.....\$.30

4 Mammoth blooming size bulbs..... 1.00
10 Mammoth blooming size bulbs..... 2.25

REGAL LILY The large, immaculate, pearly white trumpets flushed pink on the outside with a deep golden throat are the joy of the June and July garden. Exceedingly, delightfully perfumed. It is very hardy, easy of culture, free flowering, and permanent. Does well in any soil or location.

The bulbs we are offering are splendid, healthy, disease free, and winter hardy. No better bulbs are obtainable anywhere regardless of price. If planted this spring, we will guarantee an abundance of bloom from each bulb this summer. Each.....\$.20

8 Large bulbs for..... 1.00
25 Large bulbs for..... 2.90

LILY SPECIOSUM MAGNIFICUM This is a grand improvement on the variety Rubrum, being larger, more colorful, and more vigorous. The most outstanding of all fall blooming lilies. Plants grow from 2 to 3 feet tall and in August and September produce the gay colored fragrant flowers. Color is a carmine-pink spotted and margined white. An outstanding cut flower, lasting ten days in water. Easily grown and perfectly hardy anywhere. Plant bulbs 6 to 8 inches deep.

The bulbs we are offering will all give abundant bloom this year and increase in number year by year. Each..\$.30

4 Large bulbs for..... 1.00
10 Large bulbs for..... 2.25

NEW TENUIFOLIUM GOLDEN GLEAM This new hybrid lily possesses all the grace and charm of the well known Coral Lily. Possesses even greater vigor and free flowering qualities. Its charm is increased by its beautiful gleaming golden color. Very fragrant, easily grown, and perfectly hardy. We are offering select 2 year old bulbs, although small will bloom profusely in your garden this June. Each.....\$.25

3 Bulbs for..... .65
5 Bulbs for..... 1.00

TIGRINUM FORTUNEI GIGANTEUM A much improved later flowering form of the Tiger Lily. When well established will grow 6 to 7 feet tall and carry as many as

40 to 50 flowers per stem. The color is a bright orange-salmon, spotted purple. Very desirable and easily grown. Plant bulbs 6 inches deep. Fine blooming size bulbs. Each.....\$.25
3 Bulbs for..... .60
10 Bulbs for..... 1.80

UMBELLATUM A very easily grown and hardy lily that produces many upright cup-shaped flowers of a lovely red during June. Flowers on stems 2 feet tall. We know of no lily that will increase faster, stand more abuse, and produce multitudes of showy flowers year after year for a lifetime than umbellatum. As showy as the best Oriental Poppies. We are making this very special offer on strong blooming size bulbs only. Each.....\$.20
3 Bulbs for..... .50
8 Bulbs for..... 1.00

30 Below Zero Lily Collection

This collection is made up of the ironclad varieties which have always withstood the ravages and bitter cold of our Minnesota winters in excellent shape. Includes a blooming range from June to September. Every one an easy variety for the beginner and absolutely hardy.

Fortunei Giganteum, Salmon-orange, August

Henryi, Golden-orange, August

Regal, White, July

Speciosum Magnificum, Crimson and white, September

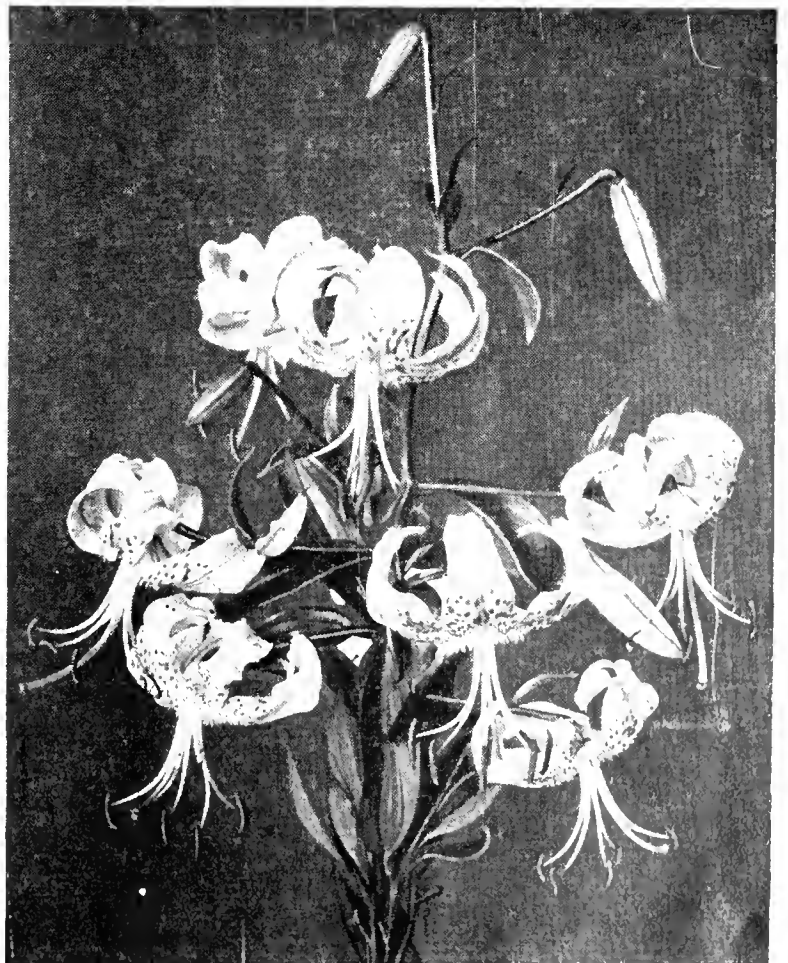
Umbellatum, Red, June

5 Large bulbs (1 of each variety) \$1.20 value for..... \$1.00

25 Large bulbs (5 of each variety) for..... 4.50

50 Large bulbs (10 of each variety) for..... 8.50

The quality and price of this collection cannot be duplicated.



Lilium Speciosum

LEHMAN'S PERENNIALS

and Golden Day Lilies

HARDY PERENNIALS



Shasta Daisy

★



Delphinium

★



Columbine
Crimson Star

★



Platycodon

★



Veronica

AJUGA REPTANS Masses of glossy, dark green foliage throughout the summer. Dark blue flowers in June and July. Indispensable for a quick ground cover in bare spots. Prefers partial shade but does well in sun if given fairly rich soil. Height 3 to 4 inches. Each 15c, 3 for 40c, 10 for \$1.00

AQUILEGIA CRIMSON STAR Unquestionably the world's finest long-spurred red Columbine. Sepals and spurs deep blood crimson with center of white petals glorified by yellow stamens. A sensation for sturdliness and free flowering qualities. Very easily grown. The plants we are offering are the result of two years of intensive growth and care. Plant it in quantity this spring to glorify your June garden. 4 for \$1.00, 10 for \$2.25, 25 for \$5.00

AQUILEGIA CANADENSIS (American Columbine) A native columbine that produces a profusion of scarlet and yellow flowers in May and June. Well adapted to almost any soil or situation but delights in a cool, partially shaded location. Strong, blooming size plants. Each 20c, 3 for 50c, 7 for \$1.00

ALPINE ASTER A very satisfactory and easily grown perennial for the rock garden or front of border. Multitudes of rose-purple chasms with orange center in May and June. Excellent for cutting. Height 8 to 10 inches. Each 20c, 3 for 50c, 8 for \$1.00

HARDY ASTERS Grow 3 to 4 feet tall and supply a grand show during late August and September. **ACRUS**, lavender, 3 feet. **BARRE'S PINK**, superb pink, 3 to 4 feet. **CHARMING**, blue, 3 feet. **KING OF THE BELGIANS**, labele blue, 3 feet. **QUEEN MARY**, lavender blue, 3 to 4 feet. **SKYLANDS QUEEN**, medium blue, 3 to 3 1/2 feet. **SNOWDRIFT**, semi-double snow white, 3 to 4 feet. Strong field plants of any of the above \$.25
One each of the 7 varieties labeled 1.25

DWARF HARDY ASTER VICTOR This new hardy aster was originated in England and is distinctly new. Plants grow about 10 inches high in a round mound which in September and October is completely covered with large sized lavender-blue flowers. They are very easy to grow and especially fine for borders in clumps and in the rock garden. We offer strong field grown plants. Each 25c, 5 for \$1.00

BITTERSWEET VINES A well known native climbing vine. The clusters of orange-red berries are popular for winter decorations. The plant is very hardy and not particular as to soil or location. The plants we are offering are ideal for starting a bittersweet screen. Each 25c, 8 for \$1.00

BLUE FLAX (Linum Perene) Every morning brings a new shower of blue to you on slender, graceful stems. Blue Flax is easily grown in full sunlight on light soil. Foliage leathery and of a pleasing blue shade. Height 18 inches. Each 20c, 3 for 50c, 8 for \$1.00

CAMPANULA TURBINATA One of the prettiest blue flowering plants for edging borders or the rockery. Flowers bright in compact mats from which spring the many large bell shaped flowers from June to October. Color from light lavender to deep purple. Height 6 inches. In constant bloom all summer. Very hardy. Each 15c, 3 for 40c, 10 for \$1.00

CAMPANULA ROTUNDIFOLIA This is the true Blue Bells of Scotland which is so abundant over the Northern states and Canada. The very slender and wiry stems give forth their small blue bells from June to September. Attractive in the rockery or in front of the border. Height 1 foot. Each 20c, 3 for 50c, 8 for \$1.00

CORALBELL BLUE de FEU An outstanding new bright red Coralbell which continues to bloom all summer. Outstandingly superior to old varieties. When well established and in bloom gives the impression of a fountain of fire. A splendid cut flower. Each 30c, 4 for \$1.00

SHASTA DAISY SUPREME A new Shasta Daisy that is the finest we have ever seen. It is unsurpassed in size, clearness of white, fullness of center, and substance of petals. The numerous pure glistening white daisies are produced on tall, strong, straight stems over the entire summer. Excellent landscape variety and ideal as a cut flower. We offer strong field grown plants that will bloom the entire summer. Each 35c, 3 for \$1.00

DELPHINIUM BELLADONNA IMPROVED A fine improvement on the old variety. Flowers larger on better plants. Light blue flowers produced all summer if not allowed to go to seed and if given plenty of moisture. By far the best Delphinium for cut flower purposes. Height 3 to 4 feet. We offer two year old clumps that will give that established look to the border this year. Each 25c, 3 for 60c, 6 for \$1.00

DELPHINIUM BELLAMOSA This is the dark blue cut and come again Delphinium. Grows 3 to 4 feet tall and is prized for cutting. We are offering one year old plants from field that began blooming last fall. Should bloom nicely this summer. Each 15c, 3 for 40c, 8 for \$1.00

DELPHINIUM CLEVIDEN BEAUTY A new English improvement on the Belladonna type. A taller plant with larger clear azure-blue flowers. A fine improvement. One year old plants from field. Each 20c, 3 for 50c

DIANTHUS ARENARIUS (Sand Loving Pink) This pink delights in a sandy soil and sun. Flowers white with carmine ring on 5-inch stems. Deeply fringed and fragrant. Excellent for dry hot places. Each 20c, 3 for 50c, 7 for \$1.00

DIANTHUS DELTOIDES (Maiden Pink) One of the prettiest border pinks, making neat mats of foliage bearing thousands of bright crimson flowers during July and August. Very easily grown and satisfactory in the rockery. Height 5 inches. Each 15c, 3 for 40c, 10 for \$1.00

FUNKIA (Plantain Lily) A family of plants much prized for their neat foliage effect and late summer flowers. Excellent plants for bordering walks or for the margins of lily pools. All will grow and bloom well in locations that receive no sunlight whatever. Ideal for edging between shrubbery and the lawn. Easily grown and hardy.

CAERULEA LANCEOLATE August blooming, blue flowers. Broad, shapely green leaves. Each 25c, 3 for 60c

LANCIFOLIA Excellent plant for shade. Lilac-blue flowers in August and September. Exceptionally fine for edging. Each 20c, 3 for 50c

SUBCORDATA GRANDIFLORA Large white fragrant lily-like flowers in August. Each 35c, 3 for 90c

VARIEGATA Beautiful edging plant with its green and yellow variegated foliage. Blue flowers in August. Each 35c, 3 for 90c

Special Funkia Collection. 1 each of the 4 varieties, \$1 postpaid.

FESTUCA GLAUCA (Blue Fescue Grass) Much used for edging borders and for contrast with darker foliage. Grows in compact clumps making a delightful show because of the bright blue color of foliage. Height 8 to 10 inches. Each 15c, 3 for 40c, 10 for \$1.00

HEN AND CHICKENS Desirable and fascinating hardy succulent plants for the rock garden. Plants are hybrids grown from seed and will show many variations. A bargain. We offer large clusters at 15c each, 10 for \$1.00

ORIENTAL POPPIES Named varieties; our selection of colors which will include red, pink, and salmon. For July, August, and September delivery. 6 two year old plants for \$1.00

PLATYCODON (Japanese Balloon Flower) The large, bell-shaped flowers of rich blue glorify the perennial garden during July and August when a cool color is needed. Given a rich, sandy, well-drained soil in full sun the Platycodon is a very permanent plant. We have plants in our border that have been undisturbed for twelve years and have never failed to give an abundance of bloom each summer. Grows 2 to 3 feet tall. Splendid two year old roots that will make a good showing this summer. Each 20c, 7 for \$1.00, 25 for \$3.00

PYRETHRUM (James Kelway) A new English strain of large flowering single red. Many unusual fine crimson shades with a center of deep gold. Extra long, strong stems make this variety fine for cutting. We offer strong blooming size plants. Each 25c, 3 for 60c, 7 for \$1.00

ROCK GARDEN PLANTS An amazing value of ten different mature, field grown plants. This offer is only possible because of quantity production. 10 plants, all different for \$1.00

SEDUMS All distinct, hardy and desirable varieties. Both upright and creeping. Our selection of varieties. A \$2.00 value. 10 plants for \$1.00

VERONICA (Speedwell) The veronics are considered to be one of the best perennials for American borders. They are easily grown, perfectly hardy, last indefinitely, and give some wonderful cutting material.

VERONICA LONGIFOLIA SUBSESSILIS A fine plant for the hardy border increasing in beauty year by year and giving loads of good cutting material. Blue flowers on the compact, tapering spikes from July to September. Height 2 feet. Each 25c, 3 for 60c, 6 for \$1.00

VERONICA ROYAL BLUE A beautiful variety producing handsome spikes of rich gentian blue flowers during June and July. One of the prettiest and brightest. Height 1 foot. Each 25c, 3 for 60c, 6 for \$1.00

VERONICA SPICATA NANA A dwarf variety very fine for edging or the rockery. Foliage compact and neat. Spikes reach a height of 6 to 8 inches. Rich, violet blue flowers in May and June. Each 20c, 3 for 50c, 8 for \$1.00



HEMEROCALLIS

The Golden Day Lilies

The Hemerocallis is becoming very popular for garden planting. They possess the characteristics of perfect perennials. They are perfectly hardy, easy of culture, free blooming, colorful, and have no insect enemies or diseases. Most varieties have a very pleasing fragrance. They can be planted in either spring, summer, or fall. By planting our strong, sturdy plants in spring you can be assured of abundant bloom this summer. They will tolerate almost endless neglect, poor soil, and locations, but to have them at their best give them rich soil and do not let them suffer for want of water during dry periods. When planting give them about two feet of space to develop in.

By selecting the different varieties one may have Day Lilies in bloom from May to early September in colors from pale yellow to gold, apricot to orange to almost red.

AMARYLLIS Resembles a large, golden-orange Amaryllis. Very desirable. July blooming. We consider this one of the very best. Height 3 feet. Each \$1.00

CITRINA A very fragrant, night blooming pale lemon-yellow. Has an excellent and robust habit of growth and an abundance of dark green foliage. Very free flowering. July blooming. Height 3 1/2 feet. Each 50c

D. D. WYMAN Large, spreading flowers up to 6 inches across of a deep, rich golden-yellow with a splash of tawny red on each petal. Height 3 feet. July and August blooming. Each \$1.00

DUMORTIERI A dwarf plant with flowers of the purest deep orange. The earliest to bloom in May. Height 1 1/2 feet. Each 25c

GEORGE YELD Large, open flowers of the richest orange shaded scarlet. Strong, erect stems carry the many blossoms at 3 to 3 1/2 feet. July and August blooming. Each \$1.50

FLAVA Sweet scented, lily-like flowers of the clearest yellow. June blooming. Height 2 feet. Each 35c

GOLDENI A most effective garden variety of a deep golden-orange. Outstandingly good. Height 3 feet. July blooming. Each \$1.00

FLORHAM Rich, golden-yellow trumpets. Very strong grower. June and July flowering. Height 3 feet. Each 25c

GOLD DUST Brilliant, glowing golden-orange of finest form. One of the best early flowering day lilies producing multitudes of exquisite flowers during May and June. Plant habits very trim. Exceptionally showy. Height 2 feet. Each 50c

LEMON KING Fluted, pale lemon-yellow. The best of its color. July blooming. Height 3 1/2 feet. Each 75c

MARGARET PERRY A unique combination of colors. Orange with cadmium yellow throat and stripe down center of each petal. Very vigorous and well branched which extends blooming period almost a month. July and August blooming. Height 4 feet. Each \$1.00

MIDDENDORF MAJOR A very striking variety with huge, rich orange-yellow flowers in May and June. Height 2 feet. Each 35c

OLIF A fascinating shade of orange-yellow. A refined flower always admired. A strong, sturdy growing variety blooming in mid-summer. Height 2 1/2 feet. Each 75c

ORANGE KING A fine, even, deep orange. Excellent texture and pleasing form. Each 50c

QUEEN OF MAY Bold, open flowers of an exquisite apricot-orange. Strong, sturdy grower that is always in bloom with the lily. Dependable and true. Often gives a second blooming period in fall. Height 2 feet. Each 75c

SOVEREIGN Medium sized, chrome-yellow flowers in late June. A refined variety. Height 2 1/2 feet. Each 50c

THE GEM A deep yellow of fine substance. Excellent form, equal to the best lilies. Height 3 feet. July blooming. Each \$1.00

THUNBERGI An evening blooming, pale yellow. Very fragrant. July and August blooming. Height 3 feet. Each 35c

WINSOME Mr. Yeld considers this the best of all his hybrids. Flowers full, wide-spreading and pleasing shade of empire yellow, tinged red on reverse. Height 2 1/2 feet. June blooming. Each \$1.25



The Gem

CALYPSO Originated by Luther Burbank. An evening blooming type, rather large, clear lemon-yellow. Flowering scapes held stiffly erect. Flowers open about sunset and stay open only during the night and early morning. Will open on cool and cloudy days. Each 75c

DR. REGAL Very fragrant, bright orange-yellow. Exceptionally free flowering. May blooming. Height 1 1/2 feet. Each 35c

GOLDEN OPPORTUNITY COLLECTION

Do not pass up the opportunity to acquire this glorious array of Day Lilies for your garden at such a tremendous saving. Truly a representative group. Every one a gem for the beginner. All different. Correctly labeled and real quality field grown plants. All will bloom this season.

Calypso	Ohf
Dr. Regal	Orange King
Gold Dust	Queen of May
Lemon King	The Gem
Margaret Perry	Thunbergi

One each of the 10 varieties
(An actual \$5.45 value)

for \$3.75
Postpaid

ELITE COLLECTION

Make your own selection at a saving of these newer outstanding Hemerocallis. They will delight you.

Amaryllis	Lemon King
D. D. Wyman	Margaret Perry
George Yeld	The Gem
Goldeni	Winsome

You May
Select any 3 for \$2.75.
Any 6 for \$5.00

ECONOMY DAY LILY COLLECTION

This attractive collection is made up of five good tried and proven varieties that will add much to any garden. By planting these five you will have Day Lilies in bloom from May to August.

Dumortieri	Florham
Gold Dust	Sovereign

Thunbergi
One each of the five for

\$1.50
Postpaid

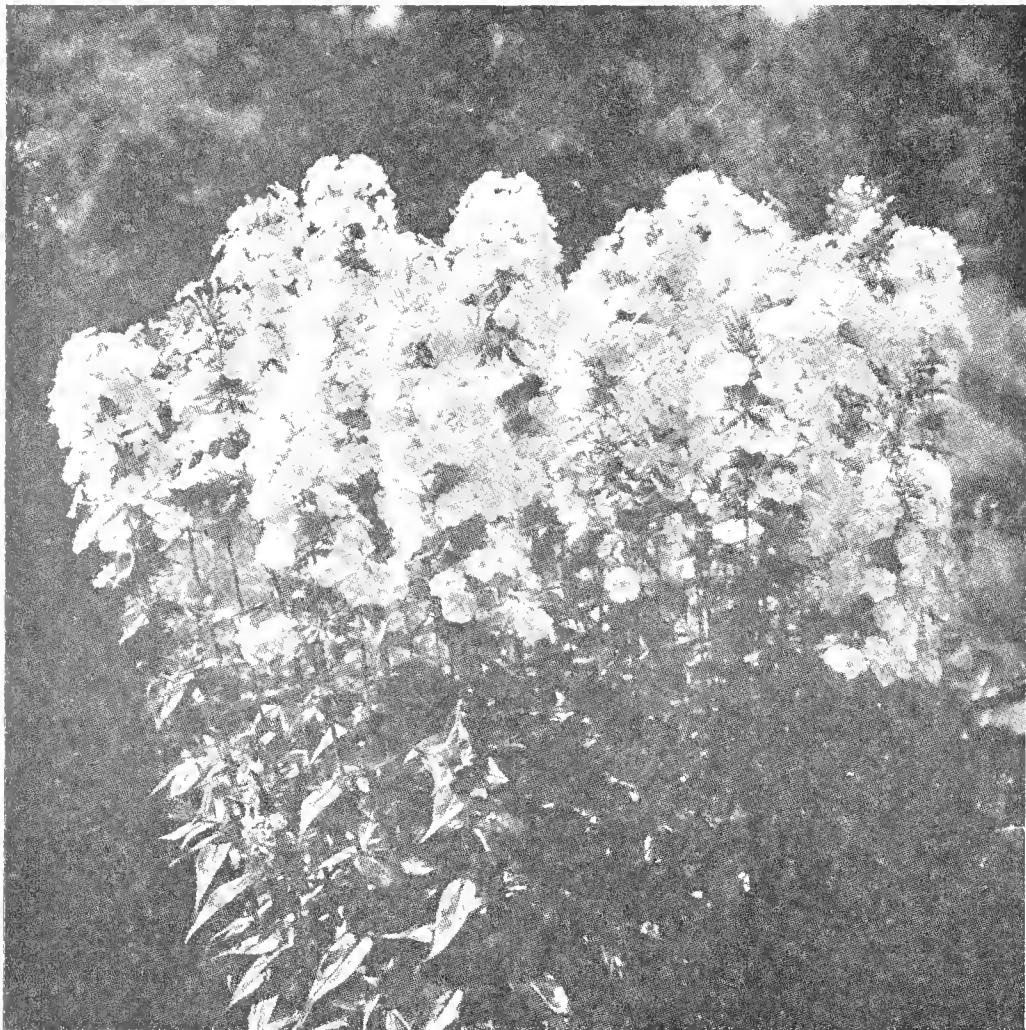
(A \$1.85 Value)



Goldeni

WE PREPAY ALL TRANSPORTATION CHARGES

The LEHMAN GARDENS * Faribault, Minnesota

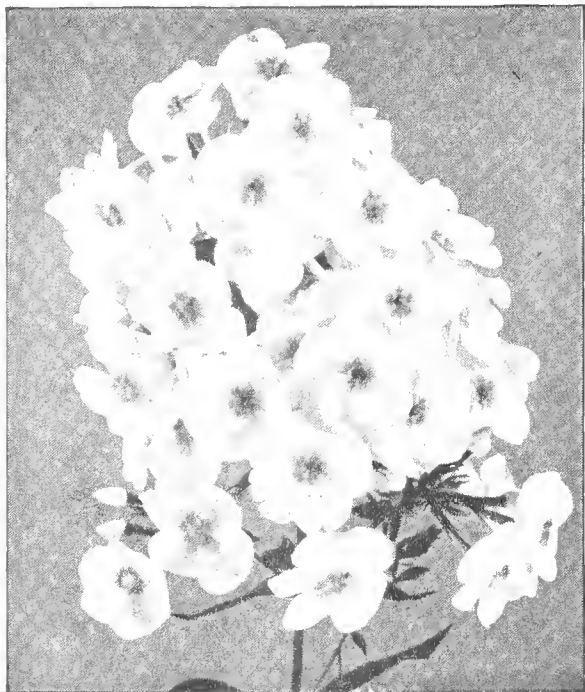


Miss Lingard

Without the Hardy Phlox our gardens would surely be barren during July, August, and September when their brilliant colors overshadow all other perennials. Phlox can be used in masses in the perennial garden and clumps among the shrubbery are very effective. They thrive best in a partly shaded location in soil that is deeply dug, well drained but moist and the richer the better. Phlox must never suffer for want of moisture as the root system is very shallow so that during prolonged dry spells water should be applied freely. Can be planted either spring or fall 8 to 10 inches apart.

Our fields presented a glorious sight last summer and all who saw them exclaimed of the marvelous health and vigor maintained. You can rest assured if you plant our phlox plants you will receive the best that money can buy. We list only strong field grown plants.

AFRICA Brilliant deep carmine with darker eye. Very large arched heads. Splendid strong grower. Very hardy. One of the best dark reds. Medium height. Each 25c, 3 for.....\$.60



Phlox Count Zeppelin

HARDY PHLOX

Masses of this cool, gleaming white seem an almost indispensable feature of the August garden; no other flower, except perhaps the beautiful Madonna Lily, conveys such a sense of refreshment.

APOLLO Deep, rosy-purple shaded crimson. Immense globular heads carried on tall, straight stems. Very free flowering. Each 25c, 3 for.....\$.60

ATHIS Clear salmon pink. Tall, slender stems hold flowers high above foliage. Use in back of border. Each 20c, 3 for.....50c

BETTY LOU Bright orange-scarlet with deep crimson center. Plants much branched giving a long season of bloom. Medium height. Each 20c, 3 for.....50c

B. COMPTE Rich, satiny wine-red. A very striking dark shade. Splendid medium grower. Each 20c, 3 for.....50c

CAMILLA New light salmon-pink. Extremely showy. An outstanding bright color. Medium height. Each 25c, 3 for.....60c

COMUS Clear, cherry red overspread bright scarlet. Flower heads arched round and compact. Individual florets large. Medium height. Each 25c, 3 for.....60c

CONQUERICOT Piercing scarlet so brilliant as to seem glowing with fire. Plant habit medium strong. Each 20c, 3 for....50c

COMMANDER Immense globular heads of fiery cherry-red with darker eye. One of the best phlox in existence. Each 25c, 3 for.....60c

COUNT ZEPPELIN The purest white with dark vermillion red eye. An outstandingly good clean looking phlox. Tall grower. Each 20c, 3 for.....50c

ECLAIREUR Large purplish-crimson with rays of light and white halo. Very sturdy and exceptionally hardy. Medium height. Each 20c, 3 for.....50c

2 EVERBLOOMING HARDY PHLOX

These two grand varieties should be in every garden. As they bloom from June to October. They are easily grown and not affected by insects or diseases. Plan to make a generous planting of the two and have color in your garden all summer.

3 Miss Lingard, white
3 Pink Beauty, lavender-rose
6 Sturdy Field Grown Plants for

\$1.00

Postpaid



Phlox Thor

FIREBRAND Glowing crimson overlaid scarlet. The standard of perfection in its color. Much branched blooming over a long season. Medium height. Each 20c, 3 for 50c

GEORGE STIPP New glowing salmon. Individual flowers and clusters very large. Does not fade. Each 25c, 3 for 60c

GENERAL VON HEUTZ Salmon-scarlet with deeper center. Tall, airy with graceful plant habits. Each 20c, 3 for 50c

INNOCENCE A new, very vigorous pure white. Extremely large florets and spikes. The best tall, pure white phlox to date. Each 25c, 3 for 60c

JULES SANDEAU Pure clear watermelon pink. Flower heads and florets extremely large. Very distinct and outstanding. Dwarf. Each 20c, 3 for 50c

LEO SCHLAGETER New. Immense heads of brilliant scarlet overlaid with orange. A blaze of glory in the garden. No other phlox can approach it for richness of color. You should have it. Each 30c, 3 for 75c

LILLIAN New. Soft, glowing pure cameo-pink overlaid with faint blue. Immense shapely heads with many laterals giving a very extended blooming period. We believe it to be equal to the much advertised phlox Columbia. You cannot be without it. Each 35c, 3 for \$1.00

MRS. HARDING An improved, clear salmon-pink. Trusses and florets very large. We consider this the best in its color. Medium height. Each 25c, 3 for 60c

MISS LINGARD The everblooming, waxy pure white. In bloom from June to September. Very free flowering. Each 25c, 3 for 60c

ORCHID ROSE Exceptionally large florets and shapely trusses of an even, deep rose. We consider this one of the six finest phlox in existence. Grows tall. Each 30c, 3 for 75c

PAINTED LADY Soft, silvery pink, cherry red eye. A pleasing variety. Each 25c, 3 for 60c

PINK BEAUTY The rose form of Miss Lingard. Also sold as Miss Verboom. A fine addition to the phlox list. Color an even, deep lavender-rose. Very vigorous. Blooms from June to September. Tall grower. Each 25c, 3 for 60c

NEW, GLORIOUS PHLOX

Oh! What a sight our rows of these new Phlox aristocrats presented when in bloom. Every variety in this collection is far superior to anything we have ever seen. Order this collection and rest assured that you are growing only the best. The price of this collection is only possible because of quantity production.

- | | |
|----------------------|-----------------------|
| Apollo | Leo Schlageter |
| Camilla | Lillian |
| Comus | Mrs. Harding |
| Innocence | Orchid Rose |
| Jules Sandeau | Pink Beauty |

One sturdy plant of each variety for

\$2.75
Postpaid

TEN FAVORITES

These ten varieties of Phlox are the cream of the tried and proven kinds that have stood the test of time. The color range is complete and each one a dependable and beautiful variety.

- | | |
|-----------------------|-----------------------|
| Africa | Firebrand |
| B. Compte | Gen. von Heutz |
| Commander | Miss Lingard |
| Count Zeppelin | Special French |
| Eclairer | Thor |

One sturdy field grown plant of each for

\$1.75
Postpaid

R. P. STRUTHERS Improved, large florets of a rosy-red overlaid with salmon. This is a more sturdy form of the original old standby. Tall. Each 20c, 3 for 50c

SPECIAL FRENCH Deep, soft pink with darker center. A tall, sturdy grower. Each 20c, 3 for 50c

SUNRISE Bright salmon-pink with rays of light. A tall, sturdy grower. Each 20c, 3 for 50c

THOR Vigorous salmon-pink with deep crimson eye. This is one of the older varieties but still holds its own among the worthwhile phlox. Very showy, exceptionally good for large masses. Tall. Each 20c, 3 for 50c

PHLOX SUBULATA

(Moss Pink)

Invaluable plants for the rockery with their pretty, moss-like evergreen foliage that during April and May is hidden by an avalanche of blossoms in white, pink, and lilac. All varieties of Phlox Subulata should be grown in a dry location with full sunlight. A few of each color should be in every garden. Excellent for edging purposes.

ALBA Pure white flowers completely cover the compact plants in May. Of slower growth than the other varieties. Each 20c, 3 for 50c, 8 for \$1.00

ATROPURPUREA New. A splendid novelty. A vivid carpet of deep wine red completely covering the bronze green foliage in May and June. Habit of growth excellent. Very free flowering. Plant it in masses for a gorgeous sight. Each 25c, 3 for 60c, 6 for \$1.00

AUTUMN ROSE A new variety of outstanding merits. The bronze foliage is completely covered with bright rose flowers in spring and again during the cool fall months. Each 25c, 3 for 60c, 6 for \$1.00

LILACINA A robust, creeping variety. Fine for bold masses in the rockery. Rose magenta flowers in May. Evergreen foliage — pretty in winter. Each 20c, 3 for 50c, 8 for \$1.00

ROSEA A shower of bright rose flowers covering compact, creeping foliage. Very showy in the rockery and makes an excellent edging plant. Each 20c, 3 for 50c, 8 for \$1.00

One each of the above Phlox Subulata for \$1.00, 3 each for . . \$2.65



Phlox Subulata in Rockery

For a Blaze of Glory in the Fall Garden Plant Lehman's Hardy Korean Chrysanthemums

The introduction of the Hardy Korean Hybrid Chrysanthemums has taken the flower lovers by storm. Truly no race of flowers has attained such popularity. All the varieties listed are perfectly hardy with reasonable winter protection and will grow on from year to year paying tremendous dividends in showy fall flowers. All plants are strong and vigorous from 2½-inch pots and will make heavy blooming plants by fall.

APOLLO Superb autumn color—a sparkling combination of bronze, red, and gold suffused with glowing salmon. The single flowers, 2 inches across, are produced in immense sprays. Long flowering period. Height 2½ feet. Each..... 25c

CERES A lovely combination of old gold, chamois-yellow and soft coppery bronze. The mature flower petals appear as if dusted with gold. Handsome, sturdy plant producing a quantity of nicely formed single flowers in branching sprays. Height 2½ feet. Each..... 35c

DAPHNE Altogether a new shade of pink to the chrysanthemum. An exquisite blending of Daphne pink, with an underlying sheen of lilac rose, enhanced with prominent golden stamens in the center. The single flowers, 3½ inches in diameter, carried in graceful sprays, are especially frost resistant. Fine healthy growing habit. Height 2½ feet. Each..... 25c

DIANA A new color note for the garden. Chatenay-rose-pink, mingled with lilac rose and soft salmon, the tones of

which vary with the degree of light. The triple rays of petals give an appearance of fullness which is none the less dainty. Height 2½ feet. Each..... 25c

MARS Deep amaranth red, changing to wine red, overlaid with a velvety sheen. A distinct and striking color effect. Height 2½ feet. Each..... 25c

MERCURY The three-inch single flowers open bronze red and change to coppery bronze as they mature, a charming effect in the garden. The graceful sprays when cut keep two or three weeks. Height 2 feet. Each..... 25c

SPECIAL COLLECTION OFFER

1 each of the 6 for

\$1.50

Postpaid

PINK CUSHION CHRYSANTHEMUM

Also sold as Amelia, Blaze-O-Mum and Azaleamum.

The sensation of the Century of Progress. The plant is a dwarf, rounded-compact mass of double rose pink flowers from late August to frost. Not unusual to count 500 to 600 flowers on a single plant. Hardy and easy to grow. Strong potted plants that will bloom heavily by August. Each 30c, 3 for 75c, 10 for..... \$2.25

